



Recent Trends in Food Policy

Laurie J. Beyranevand

Professor of Law

Senior Faculty Fellow of Food Law and Policy



Food Policy and the Trump Administration



Mother Jones

**Trump Is Slowly Undermining Obama's Work on
Healthy Food**

Why Americans Lead the World in Food Waste

Calories are cheap and people are picky.



Elaine Thompson / AP

ADAM CHANDLER

JUL 15, 2016 | BUSINESS

Food Waste

Nutrition Facts

Serving Size 1 cup (228g)
Serving Per Container 2

Amount Per Serving

Calories 250 Calories from Fat 110

% Daily Value*

Total Fat 12g **18%**

Saturated Fat 3g **15%**

Trans Fat 1.5g

Cholesterol 30mg **10%**

Sodium 470mg **20%**

Total Carbohydrate 31g **10%**

Dietary Fiber 0g **0%**

Sugars 5g

Protein 5g

Vitamin A 4%

Vitamin C 2%

Calcium 20%

Iron 4%

* Percent Daily Values are based on a 2,000 calorie diet.
Your Daily Values may be higher or lower depending on your calorie needs:

	Calories:	2,000	2,500
Total Fat	Less than	65g	80g
Sat Fat	Less than	20g	25g
Cholesterol	Less than	300mg	300mg
Sodium	Less than	2,400mg	2,400mg
Total Carbohydrate		300g	375g
Dietary Fiber		25g	30g

Food Labels



the salt WHAT'S ON YOUR PLATE



2:41

+ Queue

Download

Embed

EATING AND HEALTH

FDA Is Redefining The Term 'Healthy' On Food Labels

October 3, 2016 - 5:11 AM ET

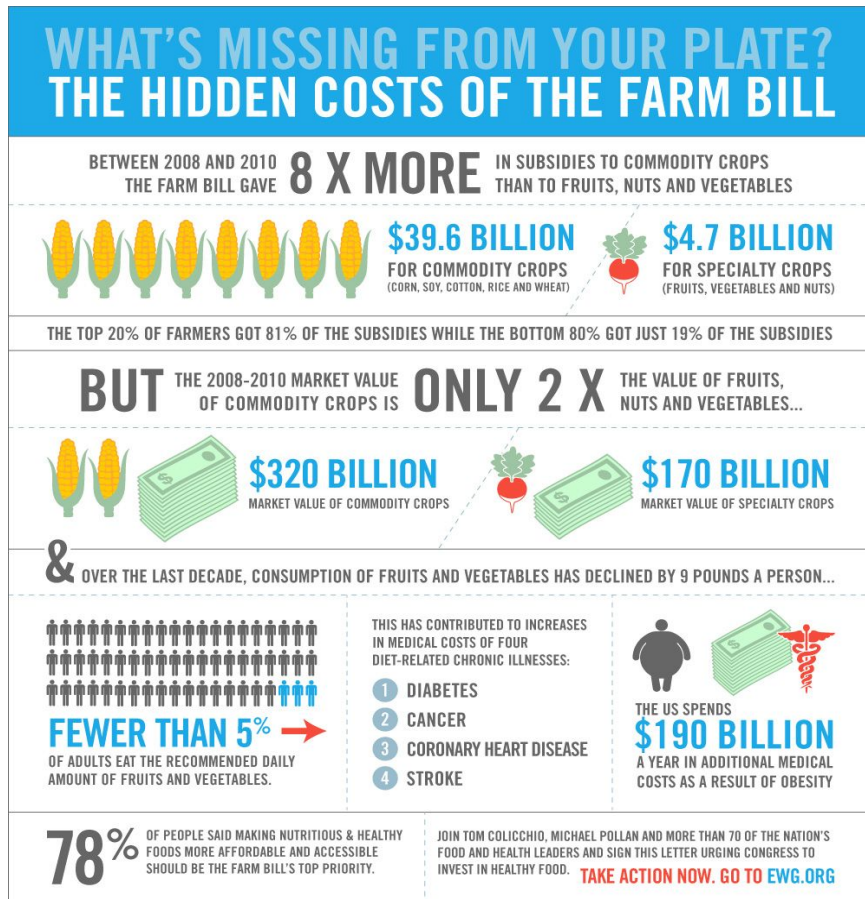
Heard on Morning Edition



ALLISON AUBREY



The Farm Bill



Coordinating Food Law and Policy

A National Food Policy for the 21st Century

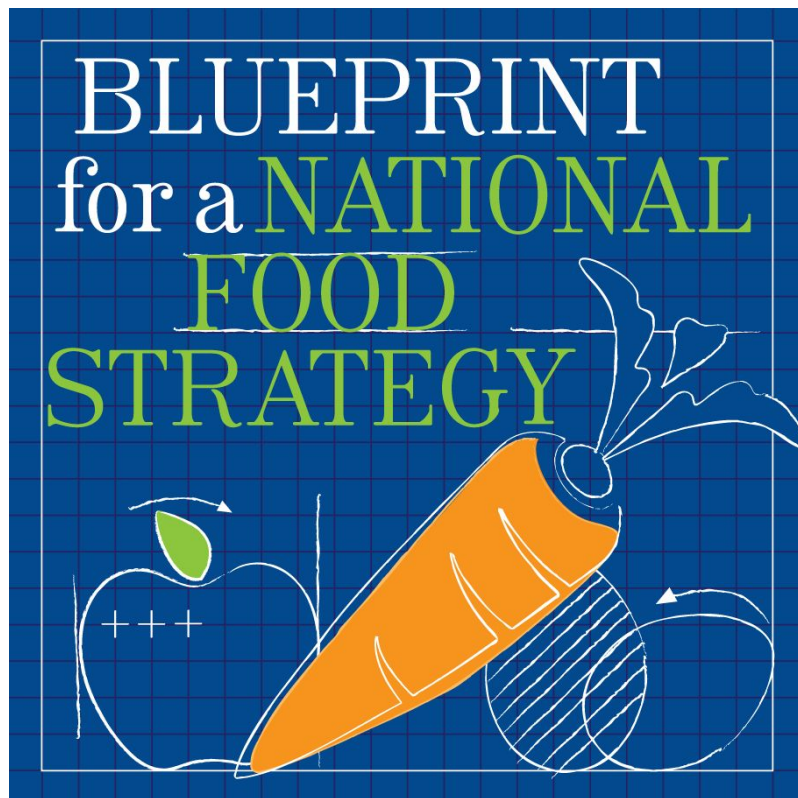
A memo to the next president

by Mark Bittman, Michael Pollan, Ricardo Salvador, Olivier De Schutter

October 2015



• • •



Thank You!

Laurie J. Beyranevand

Professor of Law

Senior Faculty Fellow of Food Law and Policy

lbeyranevand@vermontlaw.edu